

First Strike FS1 speaker replacement

This information is brought to you by Tim Heinrichs and First Strike Meters.

Use caution during this process. If you feel you are unable to perform these actions we can do it for you.

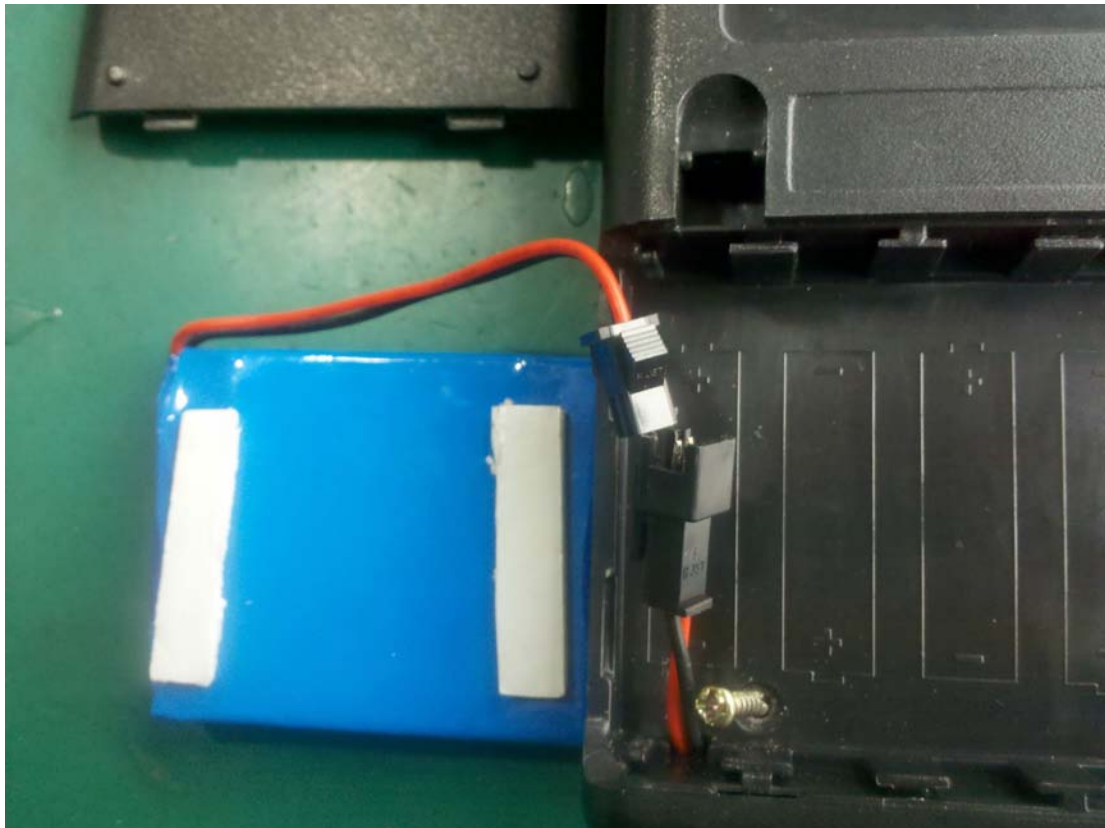
[Request a Return Authorization Number](#) or Contact us at [First Strike Meters](#).

1. Unscrew the 4 screws



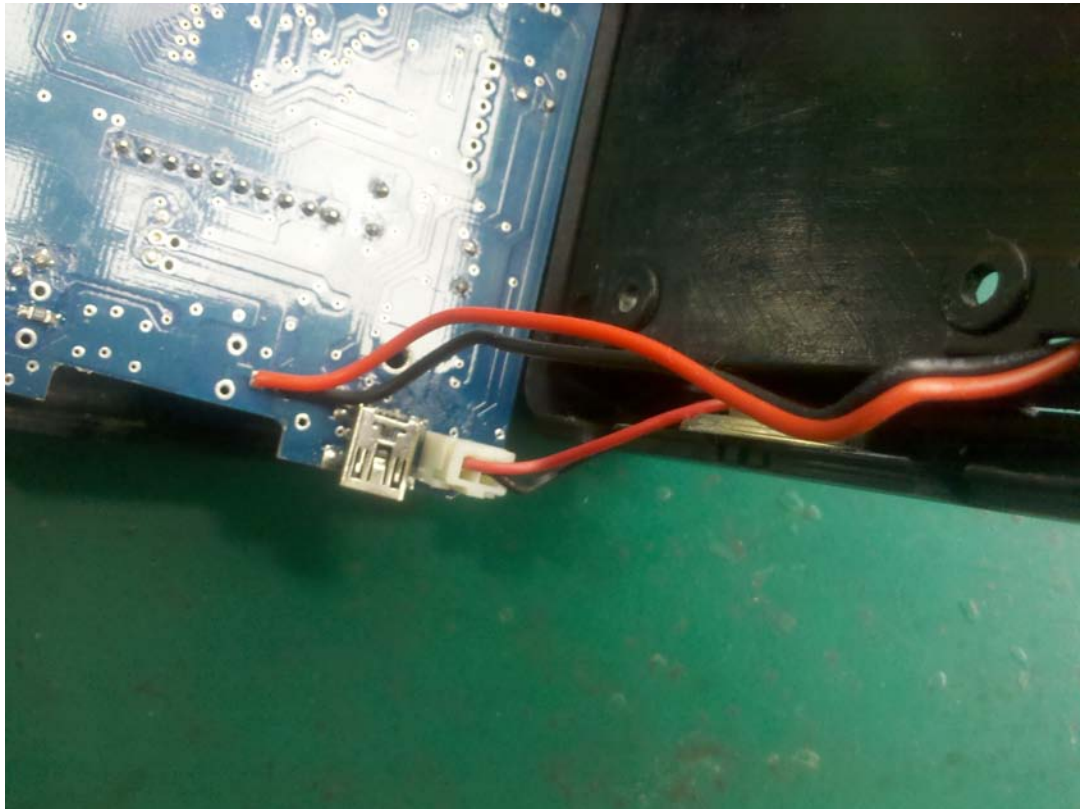
First Strike FS1 speaker replacement

2. Unplug the connector of battery and carefully open the meter housing. Use caution not to over stress the connected wiring.



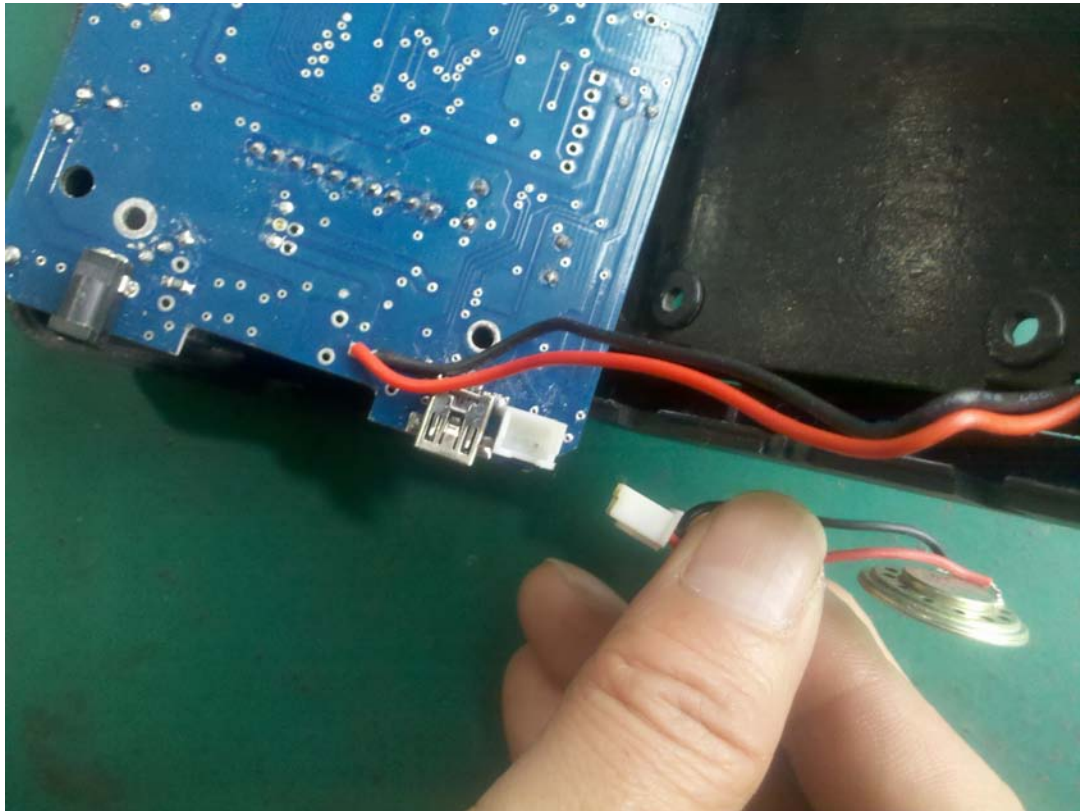
First Strike FS1 speaker replacement

3. See the connector of the speaker on the printed circuit board.



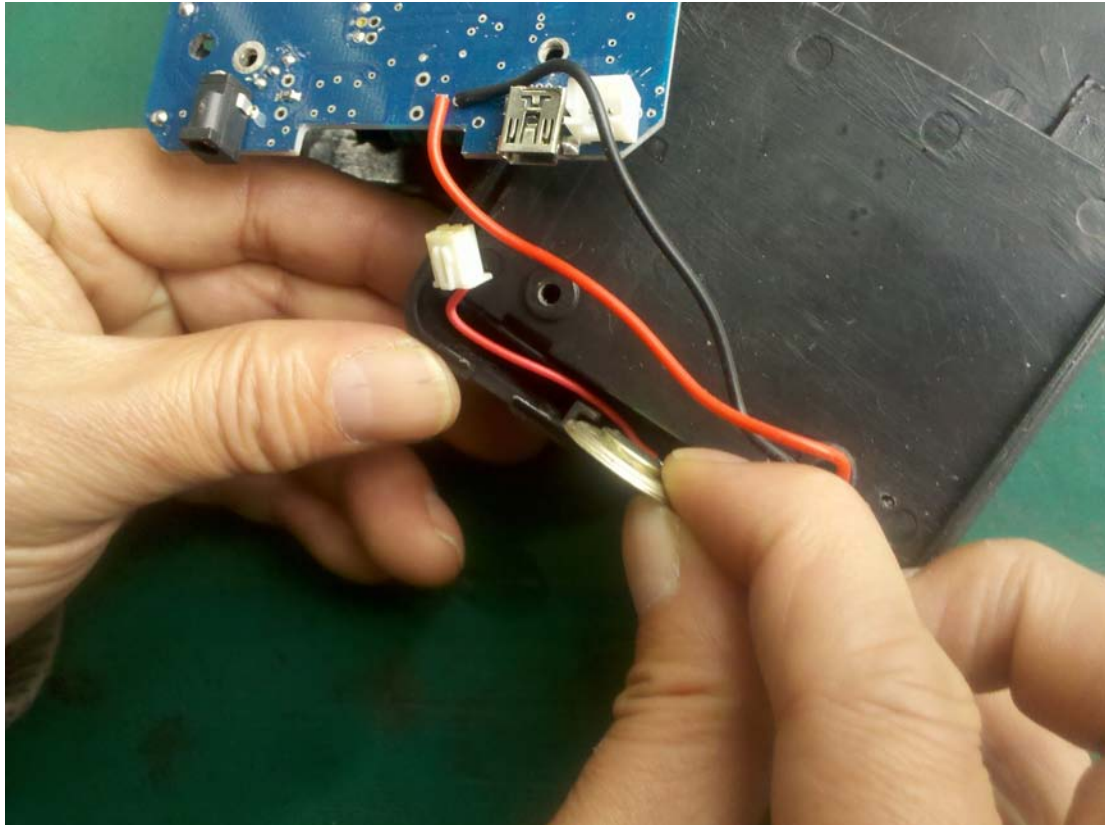
First Strike FS1 speaker replacement

4. Unplug the connector and remove the speaker noting it's positioning in the housing.



First Strike FS1 speaker replacement

5. Connect the new speaker and mount the speaker in place.



6. Carefully re-assemble the meter.

If you had any problems please [contact us](#) for assistance.

[Request a Return Authorization Number](#)

[First Strike Meters Website](#)