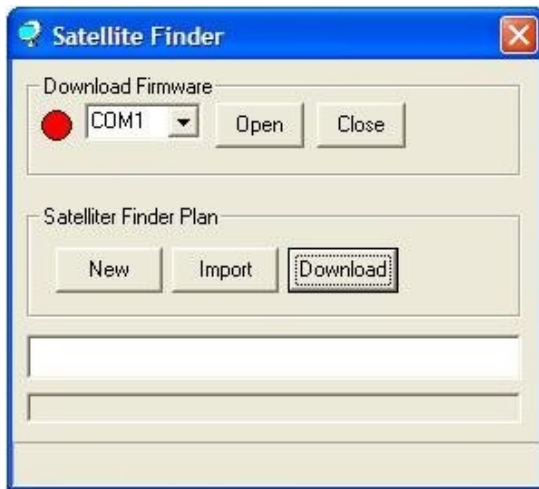
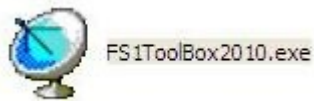


First Strike Meters

FS1 ToolBox Manual

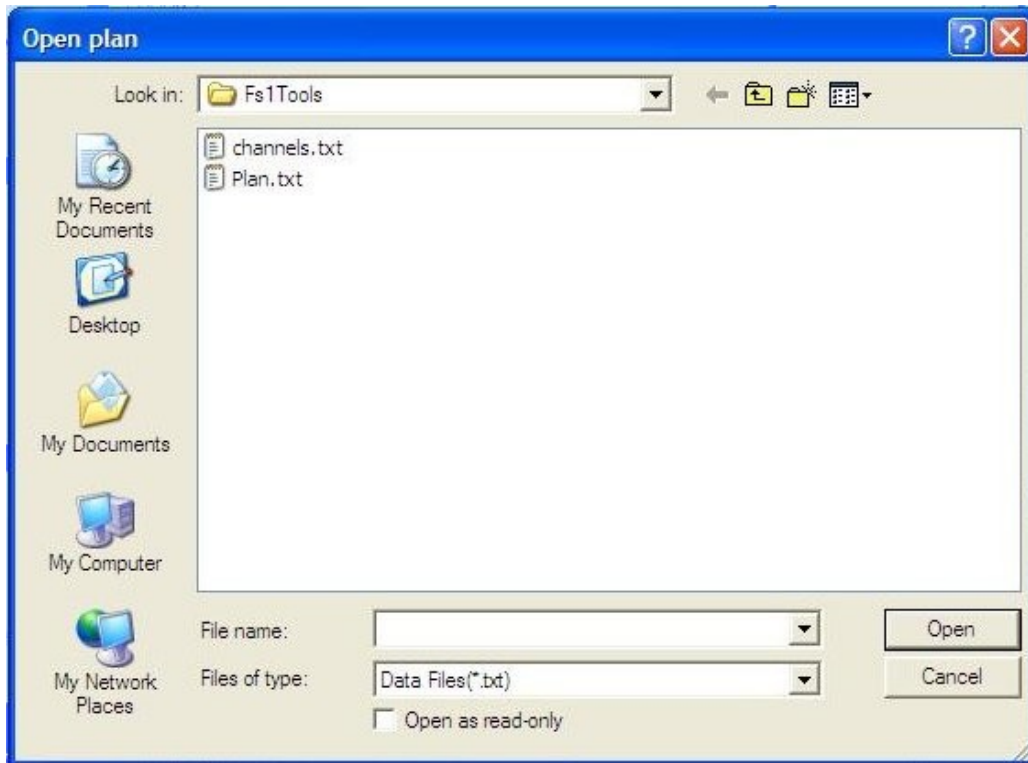
1. Connect your meter using the provided USB cable. Put your meter in "**Engineering Mode**" by holding the **Load/dB** button down while pressing the **Power** button. The meter will come on showing only the S (Signal) bar.
2. Double click the **FS1ToolBox2010.exe** to open the Tool.



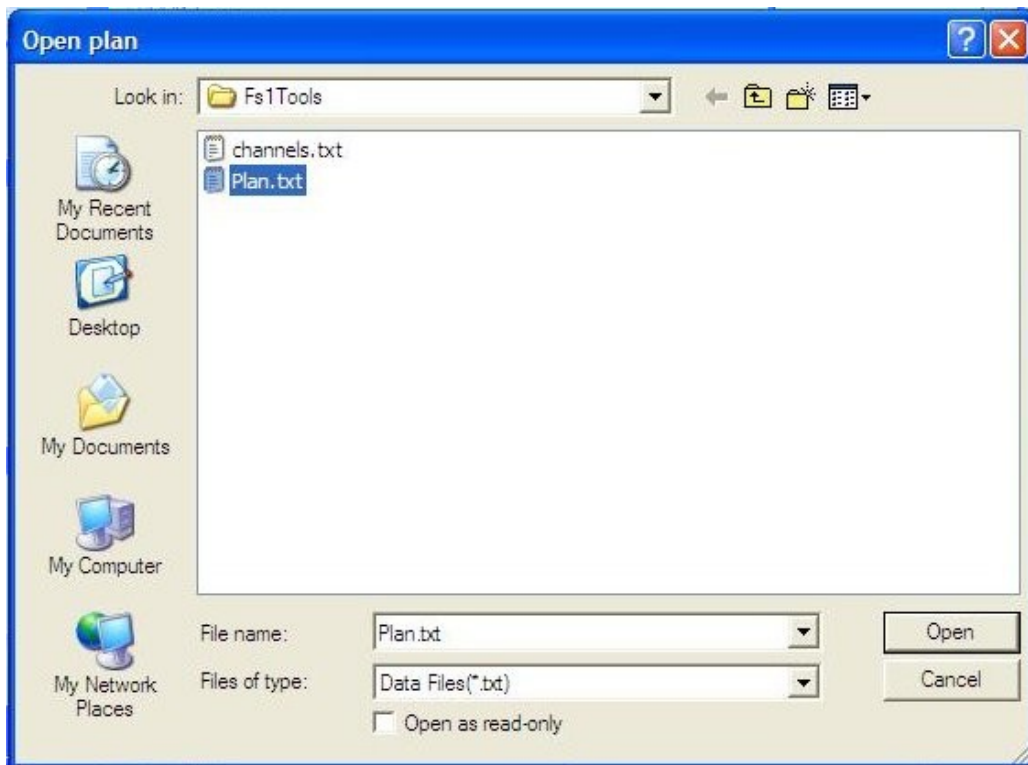
3. Set the **COM** port to match your computer. Click the **Open** button. The **COM** button turns blue when connected.



4. Click the **Download** button and select the file **Plan.txt**.




5. Click **Open** and the file will load to the meter. The meter will turn itself off when the download is finished.



You have just loaded your meter.

Notes:

If you would like to modify your list before loading it to the meter, click **Import**, choose the file and **Open** for editing. After editing the list, **Save** it and you are ready to **Download** it to the meter.



NO.	Longitude	W/E	Name	Freq	H/V	SR	LO
1	177	W	NSS9	3763	H	27501	5150
2	139	W	AMC8	4056	V	13250	5150
3	137	W	AMC7	3760	V	25195	5150
4	135	W	AMC10	3740	V	19510	5150
5	133	W	Galaxy15	3720	V	29270	5150
6	131	W	AMC11	3760	H	19510	5150
7	129	W	Ciel2/Galaxy27	11780	V	30000	10750
8	127	W	Galaxy13/Horizons1	3705	H	4880	5150
9	127	W	Galaxy13/Horizons1	11727	H	6620	10750
10	125	W	AMC21/Galaxy14	3720	V	26667	5150
11	125	W	AMC21/Galaxy14	12104	H	4340	10750
12	123	W	Galaxy12/18	3795	H	19510	5150
13	123	W	Galaxy12/18	11732	V	13240	10750
14	121	W	EchoStar9/Galaxy23	3707	V	5632	5150
15	121	W	EchoStar9/Galaxy23	11715	H	6510	10750
16	119	W	AnikF3/DirecTV7S/EchoStar7	3920	V	18447	5150
17	119	W	AnikF3/DirecTV7S/EchoStar7	11715	H	20000	10750
18	116.8	W	SatMex5	3720	H	27000	5150
19	116.8	W	SatMex5	11740	H	30000	10750
20	113	W	SatMex6/6	3724	V	3421	5150
21	113	W	SatMex6/6	12000	V	30000	10750
22	111.1	W	AnikF2	11745	H	20500	10750
23	111.1	W	AnikF2	12776	V	15000	11300
24	110	W	DirecTV5/EchoStar10/11	12224	H	20000	11250
25	107.3	W	AnikF1/F1R	3760	V	28500	5150
26	107.3	W	AnikF1/F1R	11715	H	19510	10750
27	105	W	AMC15/18	3720	H	19510	5150
28	105	W	AMC15/18	11706	H	6620	10750
29	103	W	AMC1	3740	H	29270	5150
30	103	W	AMC1	11760	V	26670	10750

IMPORTANT: After loading the meter you must "Restore factory settings". To do this, immediately after the meter powers on type in "9876". The meter will reset and turn off. Turn on the meter and the new data should now show correctly.

This software is brought to you by First Strike Meters.