

FS1 ToolBox Setup



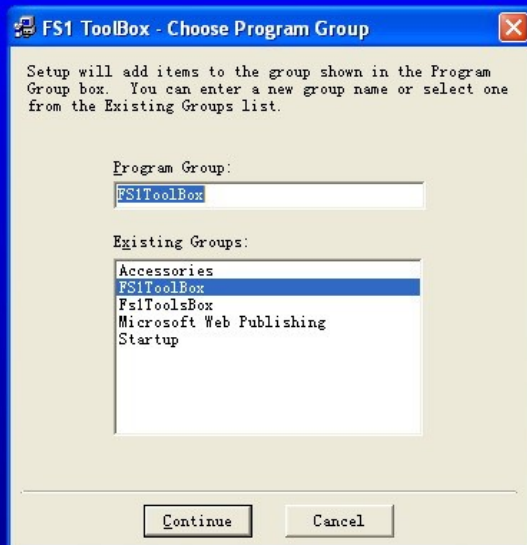
Extract all files to a direction, and run the setup.exe.
Click OK.

FS1 ToolBox Setup



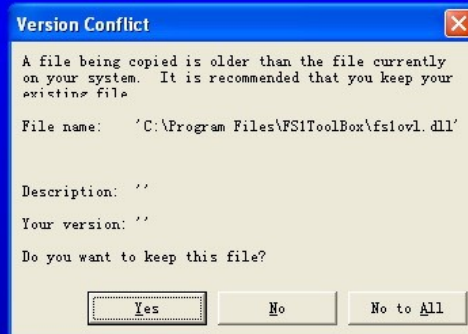
Click the installation icon.

FS1 ToolBox Setup



Click "Continue".

FS1 Toolbox Setup

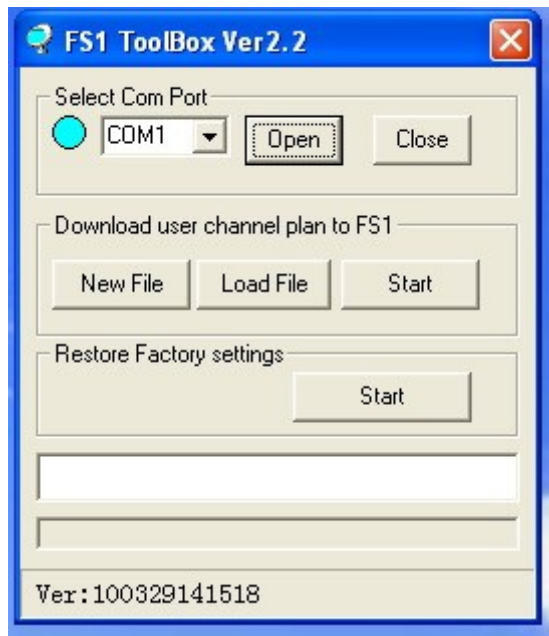


If above window shows, click "No to All".

FS1 ToolBox Setup



Finally you will see above window.



Connect the meter and the PC with USB cable. Power on the meter.

Go to “ Start” – “All programs” – “FS1 ToolBox”, then click “FS1 ToolBox”.

You will see above window.

Select the correct Com port. (See the following page for determining the correct Com port.)



Using data cable connect the FS to PC and power on, go to “Control Panel” – “Device manager”

Under the “Ports (COM&LPT)” item, you will find “Prolific USB-to-serial Comm Port (COM?)” (you won’t see it if FS1 is not connected).

Remember the COM port, which you need to set in the “FS1 ToolBox” program.

Note: This step is important, without it you can’t proceed with the FS1 toolbox.

NO.	Longitude	W/E	Name	Freq	H/V	SR	LO
1	177	W	NSS9	3762	V	13500	5150
2	139	W	AMC8	4056	H	13250	5150
3	137	W	AMC7	3760	H	25195	5150
4	135	W	AMC10	3740	H	19510	5150
5	133	W	Galaxy15	3720	H	29270	5150
6	131	W	AMC11	3760	V	19510	5150
7	129	W	Ciel2/Galaxy	11780	H	30000	10750
8	127	W	Galaxy13/H	3705	V	4880	5150
9	127	W	Galaxy13/H	11727	V	6620	10750
10	125	W	AMC21/Gal.	3720	H	26667	5150
11	125	W	AMC21/Gal.	12104	V	4340	10750
12	123	W	Galaxy12/H	3795	V	19510	5150
13	123	W	Galaxy12/H	11732	H	13240	10750
14	121	W	EchoStar9/H	3707	H	5632	5150
15	121	W	EchoStar9/H	11715	V	6510	10750
16	119	W	AnikF3/Dir	3920	H	18447	5150
17	119	W	AnikF3/Dir	11715	V	20000	10750
18	116.8	W	SatMex5	3720	V	27000	5150
19	116.8	W	SatMex5	11740	V	30000	10750
20	113	W	SatMex6/6	3724	H	3421	5150
21	113	W	SatMex6/6	12000	H	30000	10750
22	111.1	W	AnikF2	11745	V	20500	10750
23	111.1	W	AnikF2	11758	H	20500	10750
24	110	W	DiracTV5/E	12224	V	20000	11250
25	107.3	W	AnikF1/F1R	3760	H	28500	5150
26	107.3	W	AnikF1/F1R	11715	V	19510	10750
27	105	W	AMC15/18	3720	V	19510	5150
28	105	W	AMC15/18	11706	V	6620	10750
29	103	W	AMC1	3740	V	29270	5150
30	103	W	AMC1	11760	H	26670	10750
31	101	W	AMC2/4/Dir	3716	V	4340	5150
32	101	W	AMC2/4/Dir	11655	V	30000	10250

Click “Load File”, and select the “plan.txt” in the FS1 ToolBox directory.

Click the item No. and enter a new line under the selected line.

Select a line and click “Delete Col” to delete it. You can only delete the lines one by one.

Click “Close” to cancel or “Save” to save.



Power off the meter. Hold “Load/dB” button and power on again to enter programming mode. Click “Start” to start programming. The program will show “Download.....” with a progress bar.



The meter will power off after programming and the program shows “Download finished successfully”. Power on the meter and Enter “9876” to initialize the meter. The meter will power off after initializing. Power on again and the meter will show the new channel plan now.